



TUTORIAL KREO HMI Structured tags

Tutorial dedicated to the programming and managing of the structured tags

Connect
Ideas.
Shape
solutions.



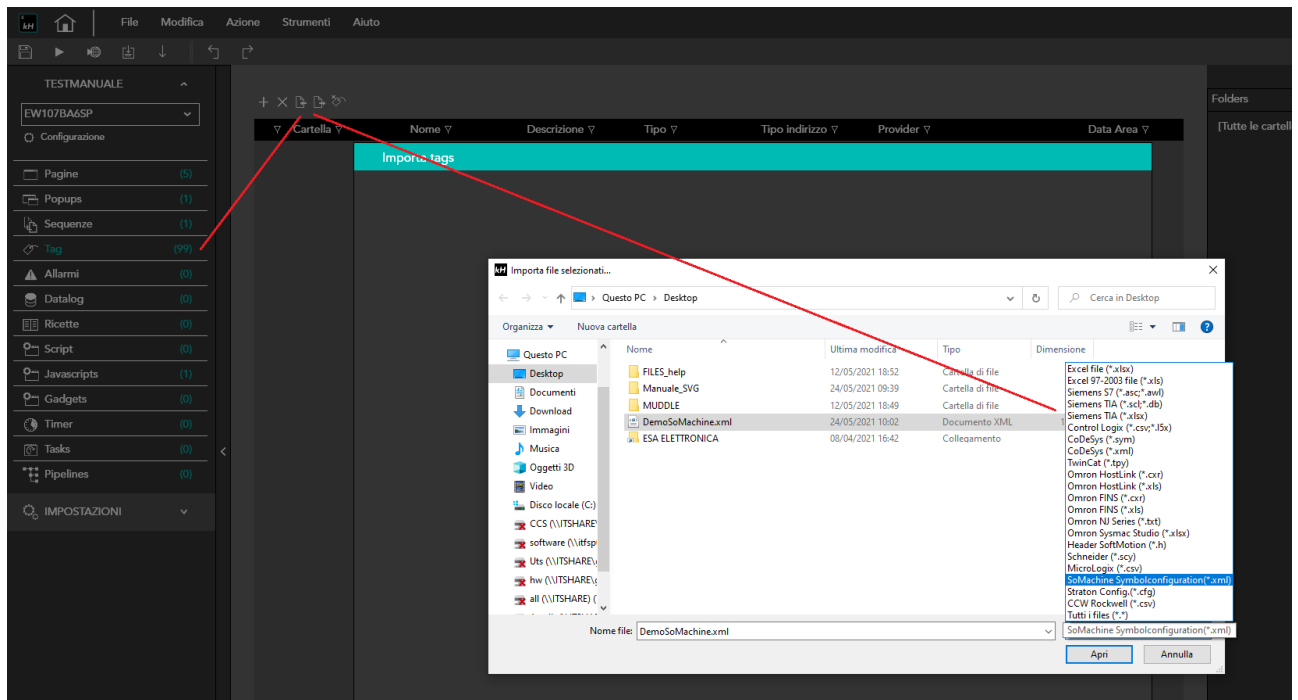
Introduction

KREO HMI is able to manage structured tags imported directly from PLC (files generated by the PLC editor).

Depending on the type of PLC (Beckhoff, Siemens, Codesys, Rockwell,... ..) it is possible to import simple or structured tags.

How to do:

- 1) In the tag table IMPORT the file generated by the plc editor





2) Map the tags to be imported to the appropriate device

The screenshot shows the 'Importa tags' dialog in the ESI software. The dialog is titled 'Importa tags' and contains a table of tags to be imported. The table has the following columns: Nome, Cartella, TipoTag, Tipo indirizzo, and Descrizione. The tags listed are:

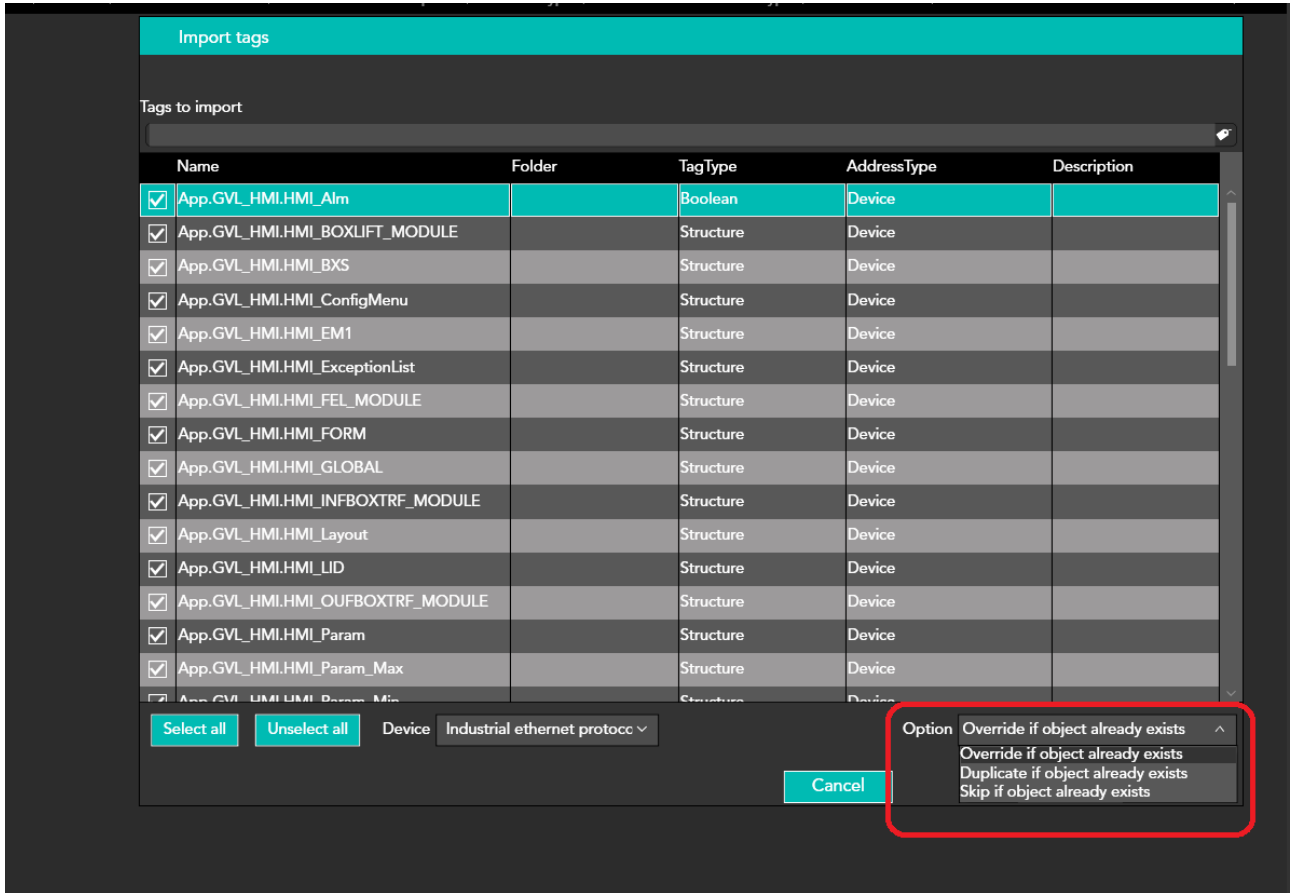
Nome	Cartella	TipoTag	Tipo indirizzo	Descrizione
<input checked="" type="checkbox"/> App.GVL_HMI.HMI_Alm		Boolean	Device	
<input checked="" type="checkbox"/> App.GVL_HMI.HMI_BOXLIFT_MODULE		Structure	Device	
<input checked="" type="checkbox"/> App.GVL_HMI.HMI_BXS		Structure	Device	
<input checked="" type="checkbox"/> App.GVL_HMI.HMI_ConfigMenu		Structure	Device	
<input checked="" type="checkbox"/> App.GVL_HMI.HMI_EM1		Structure	Device	
<input checked="" type="checkbox"/> App.GVL_HMI.HMI_ExceptionList		Structure	Device	
<input checked="" type="checkbox"/> App.GVL_HMI.HMI_FEI_MODULE		Structure	Device	
<input checked="" type="checkbox"/> App.GVL_HMI.HMI_FORM		Structure	Device	
<input checked="" type="checkbox"/> App.GVL_HMI.HMI_GLOBAL		Structure	Device	
<input checked="" type="checkbox"/> App.GVL_HMI.HMI_INFBOXTRF_MODULE		Structure	Device	
<input checked="" type="checkbox"/> App.GVL_HMI.HMI_Layout		Structure	Device	
<input checked="" type="checkbox"/> App.GVL_HMI.HMI_LID		Structure	Device	
<input checked="" type="checkbox"/> App.GVL_HMI.HMI_OUFBOXTRF_MODULE		Structure	Device	
<input checked="" type="checkbox"/> App.GVL_HMI.HMI_Param		Structure	Device	

At the bottom of the dialog, there are buttons for 'Selezione tutto', 'Deselezione tutto', and 'Avanti'. A dropdown menu is open for the 'Dispositivo' field, showing the following options:

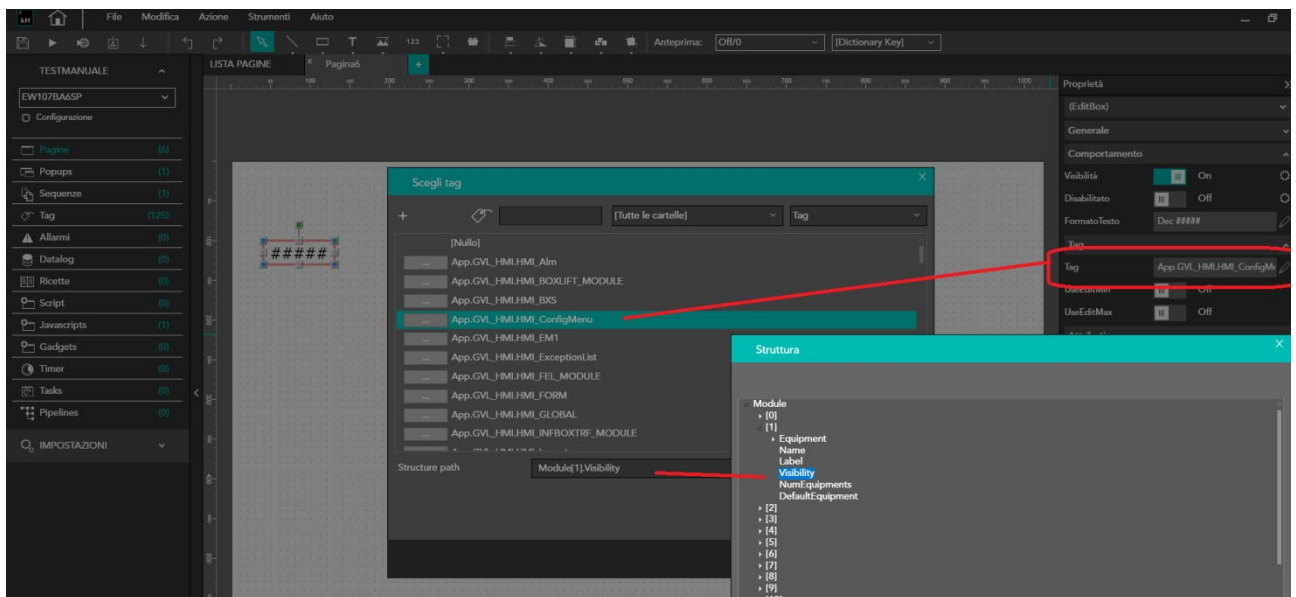
- M series PLC Codesys bas...
- Master protocol (TCP)
- Industrial ethernet protocol (S7-1200 cpu)
- M series PLC Codesys based

3) OPTIONS allow to:

- Overwrite existing objects: if the tag is already present in the project it is overwritten with the new configurations.
- Duplicate existing objects: A copy of the tag already present in the project is created automatically
- Do not import existing objects: if the tag is already present in the project, the tag will not be imported



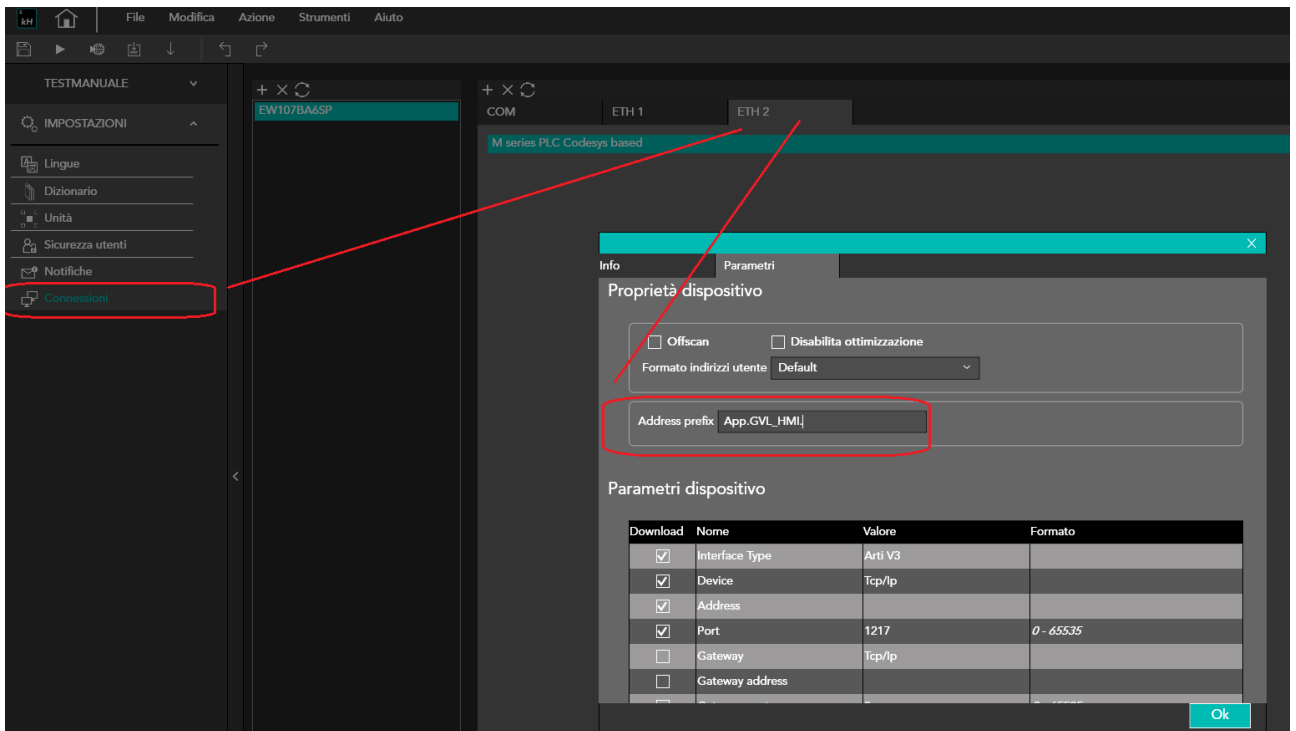
4) once imported the tag is automatically associated with the different graphic or project objects by selecting the tag name (parent) and its structure path up to the final tag





5) It is possible to import these tags without any initial prefixes of the tag-name generated by the plc-editor.

This allows you to have for example, in the case of symbolic PLCs, projects with different plc tags with the same name





Connect
ideas.
shape
solutions.

[ESA S.p.A. | www.esa-automation.com](http://www.esa-automation.com) |