



Siemens – S7 200 Smart CPU

Driver documentation

Connect
Ideas.
Shape
solutions.



Table of contents

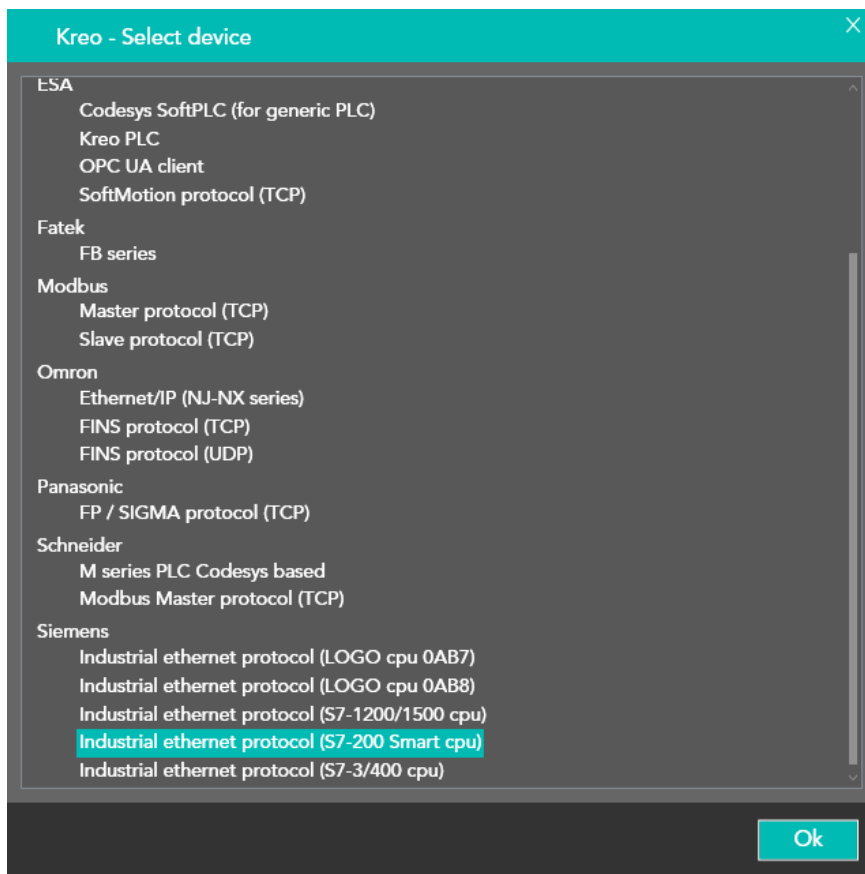
Document description	3
Driver selection	3
Communication parameters	4
Tag definition	7
Memory areas	8
Error codes.....	9



Document description

This document is dedicated to the programming and functionalities of the Siemens S7 200 Smart PLC communication driver.

Driver selection

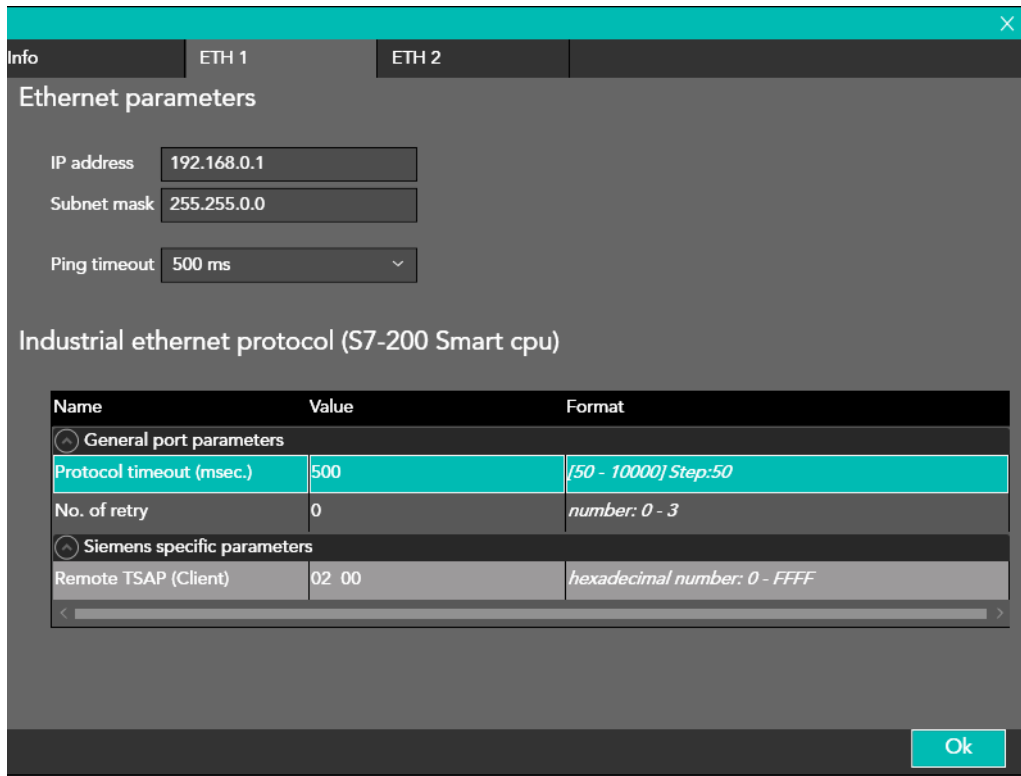


Select Siemens – Industrial ethernet protocol (S7 – 200 Smart cpu) in the Kreo HMI driver portfolio.



Communication parameters

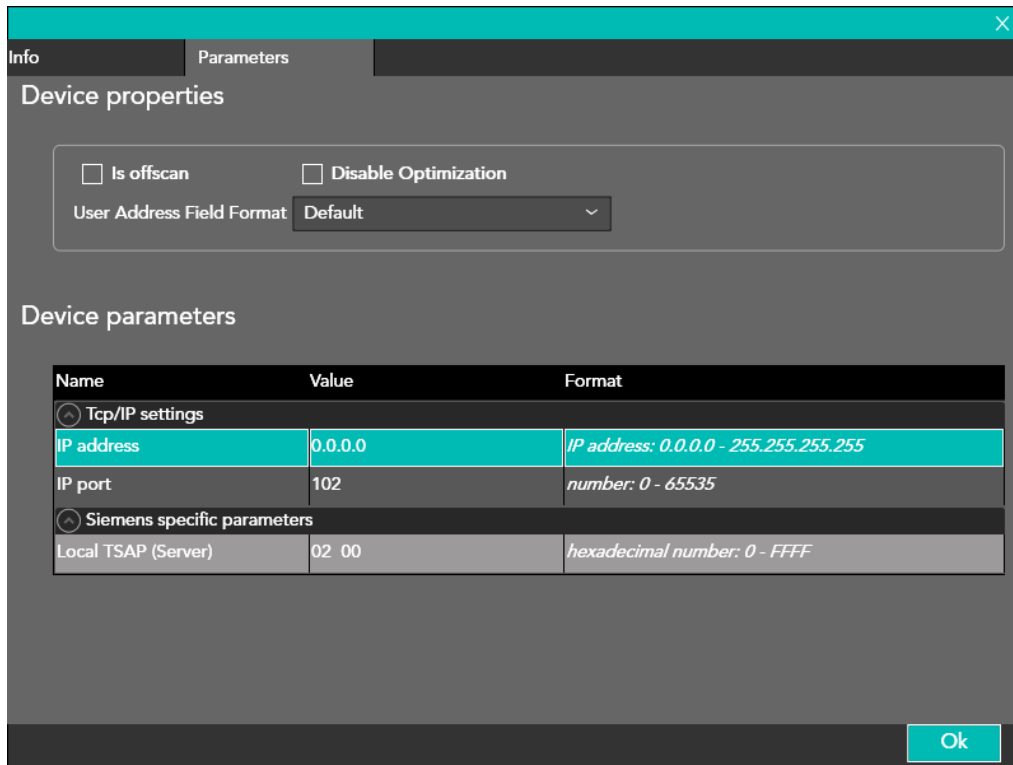
The page below is displayed by double clicking over the HMI configuration.



IP address	Ip address of the HMI port
Subnet mask	Subnet mask of the HMI port
Ping timeout	The PING command is sent in order to test the connection stability
Protocol Timeout	The PLC has to reply before this time out window will expire in order not to have communication error
Remote TSAP (Client)	Same value defined in the local properties (TSAP)



The page below is displayed by double clicking over the Siemens communication driver:



Is Offscan	The driver is defined in the project but will not be scheduled. In order to enable the driver it is mandatory to use the ST script function: TAG_SETOFFSCANDEV (device, state) TAG_SETOFFSCAN (Tag, state)
Disable the optimization	Disable the data optimization. Each tag will be refreshed with a separate communication message.
User address field format	Tag address format. The default format is defined in the driver description but the user can select the desired format (DECIMAL or HEXADECIMAL)
IP address	Ip address of the PLC port
IP port	Communication port The default value is 502
Local TSAP	Same value defined in the local properties (TSAP)



IsOffscan

Is offscan management can be used in case a specific machine module will be part of the Kreo HMI project but will not be physically connected.



A NOT CONNECTED and ONSCAN device will reduce dramatically the performance of the page refresh due to the communication timeout.

Disable Optimization:

This option can be used in order to identify wich of the data displayed on a specific page is causing the communication error.

The value will not be displayed but a series of ????? will let the user identify the faulty tag to be fixed.



Tag definition

Tag

Transformations Thresholds Database Events

Name Tag1

Address type Device

Type UnsignedInteger Array size 1

Device Industrial ethernet protocol (S7-200 Si) Dynamic

Data Area Register Data Type Bit

V 0 Bit 0

Persistent Read only Always update Use in scripts Allow subtags Tag OPC

Refresh (ms) 0 OffScan mode Never Network Id 0

Use default value

Unit [None]

Ok

The memory mapping is based on the area that can be accessed in the PLC memory structure.



Memory areas

AREA	TIPO	DIM.	R/W	DESCRIZIONE
Data Block	Bit Byte Word Dword Real String String (Plc)	1 8 16 32 32 8 8	R/W	Read/Write of optimized data block area.
Data block (Simatic Time)	TimeBase 1/100s TimeBase 1/10s TimeBase 1s TimeBase 10s TimeBase AUTO String Format	32 32 32 32 32 32	R/W	Read/Write of data block registers formatted as SimaticTime
Timer	TimeBase 1/100s TimeBase 1/10s TimeBase 1s TimeBase 10s TimeBase AUTO String Format	32 32 32 32 32 32	R/W	Legge / scrive dati tipo Timer con rappresentazione formato SimaticTime (vedere sotto per funzionamento)
Counter	Value (Word)	16	R/W	Read/Write of the Counter value
Merker	Bit Byte Word Dword Real	1 8 16 32 32	R/W	Read/Write of the Merker area
Input	Bit Byte Word Dword Real	1 8 16 32 32	R/W	Read/Write of the Input area



Output	Bit	1	R/W	Read/Write of the Output area
	Byte	8		
	Word	16		
	Dword	32		
	Real	32		

Error codes

<i>CODICE</i>	<i>DESCRIZIONE</i>
DRIVER ERROR	The request message cannot be delivered.
PROTOCOL ERROR	Generic error
PROTOCOL TIMEOUT	The PLC did not reply to the request
PROTOCOL OFFLINE	The device is not connected. The TCP socket connection cannot be established
SOCKET ERROR	The device does not complete the socket procedure
PING FAIL	The device does not reply to the PING command
FORMAT DATA ERR	The value that is going to be written is not correct
TRANSMISSION ERROR	The TCP message cannot be delivered
ERROR	Driver socket not managed



Connect
ideas.
shape
solutions.